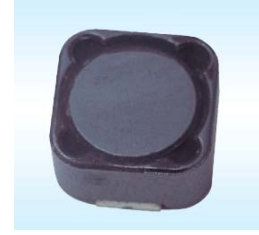


SMD Power Inductor(HLSDRH Series) 贴片功率电感 HLSDRH 系列

FEATURES 特点

- Excellent solderability and high heat resistance.
良好的可焊性
- Low cost and packed in embossed carrier tape.
低成本编带包装
- Magnetically shielded construction.
磁屏蔽结构



APPLICATIONS 应用

- Ideally used in Power supply for VTR,OA equipment, Digital camera, LCD television set notebook PC, etc as DC-DC Converter. 用于录影机、OA 仪器、数码相机、液晶电视、笔记本电脑、DC-DC 变压器之电源供应器等。

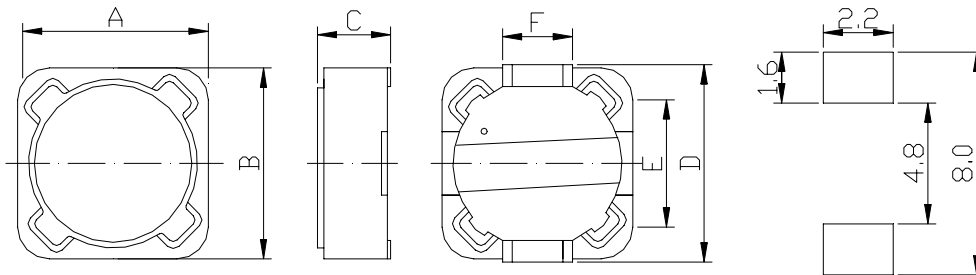
Product Identification 产品标识

HLSDRH **125** - **100** **N** : **LF**

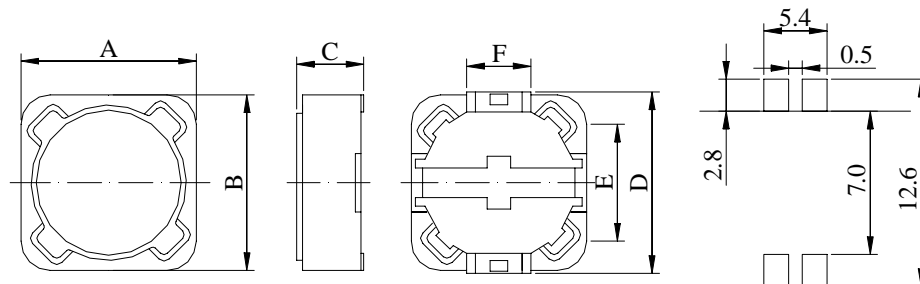
① ② ③ ④ ⑤

- ① Series name 系列名称
- ② Product dimensions 产品尺寸: (12*12*6.0 mm)
- ③ Inductance Value 电感量: (3R3:3.3uH 100:10uH; 101:100uH)
- ④ Inductance Tolerance 电感量公差: (K:10%; M:20%; N:30% or 25%)
- ⑤ Lead free products 无铅产品

Shapes And Dimensions 外形及尺寸示意图



| Series | Dimensions(mm) | | | | | |
|----------|----------------|---------|---------|-----|-----|-----|
| | A | B | C(max.) | D | E | F |
| HLSDRH73 | 7.3±0.5 | 7.3±0.5 | 3.5 | 7.2 | 4.5 | 1.8 |
| HLSDRH74 | 7.3±0.5 | 7.3±0.5 | 4.5 | 7.2 | 4.5 | 1.8 |



| Series | Dimensions(mm) | | | | | |
|----------|----------------|---------|---------|------|-----|---|
| | A(max.) | B(max.) | C(max.) | D | E | F |
| HSDRH124 | 12.3 | 12.3 | 4.5 | 11.8 | 7.6 | 5 |
| HSDRH125 | 12.3 | 12.3 | 6.0 | 11.8 | 7.6 | 5 |
| HSDRH127 | 12.3 | 12.3 | 8.0 | 11.8 | 7.6 | 5 |

Electrical Characteristics 电气性能**HLSDRH73 Series**

| Part Number | L±20% (uH) | Test freq. (KHz) | DCR max. (Ω) | Rated Current (A) |
|------------------|---------------|---------------------|-----------------|----------------------|
| HLSDRH73-100M-LF | 10 | 1.0 | 0.072 | 1.68 |
| HLSDRH73-120M-LF | 12 | 1.0 | 0.098 | 1.52 |
| HLSDRH73-150M-LF | 15 | 1.0 | 0.13 | 1.33 |
| HLSDRH73-180M-LF | 18 | 1.0 | 0.14 | 1.20 |
| HLSDRH73-220M-LF | 22 | 1.0 | 0.19 | 1.07 |
| HLSDRH73-270M-LF | 27 | 1.0 | 0.21 | 0.96 |
| HLSDRH73-330M-LF | 33 | 1.0 | 0.24 | 0.91 |
| HLSDRH73-390M-LF | 39 | 1.0 | 0.32 | 0.77 |
| HLSDRH73-470M-LF | 47 | 1.0 | 0.36 | 0.76 |
| HLSDRH73-560M-LF | 56 | 1.0 | 0.47 | 0.68 |
| HLSDRH73-680M-LF | 68 | 1.0 | 0.52 | 0.61 |
| HLSDRH73-820M-LF | 82 | 1.0 | 0.69 | 0.57 |
| HLSDRH73-101M-LF | 100 | 1.0 | 0.79 | 0.50 |
| HLSDRH73-121M-LF | 120 | 1.0 | 0.89 | 0.49 |
| HLSDRH73-151M-LF | 150 | 1.0 | 1.27 | 0.43 |
| HLSDRH73-181M-LF | 180 | 1.0 | 1.45 | 0.39 |
| HLSDRH73-221M-LF | 220 | 1.0 | 1.65 | 0.35 |
| HLSDRH73-271M-LF | 270 | 1.0 | 2.31 | 0.32 |
| HLSDRH73-331M-LF | 330 | 1.0 | 2.62 | 0.28 |
| HLSDRH73-391M-LF | 390 | 1.0 | 2.94 | 0.26 |
| HLSDRH73-471M-LF | 470 | 1.0 | 4.18 | 0.24 |
| HLSDRH73-561M-LF | 560 | 1.0 | 4.67 | 0.22 |
| HLSDRH73-681M-LF | 680 | 1.0 | 5.73 | 0.19 |
| HLSDRH73-821M-LF | 820 | 1.0 | 6.54 | 0.18 |
| HLSDRH73-102M-LF | 1000 | 1.0 | 9.44 | 0.16 |

1. Rated current is either the inductance is 25% lower than its nominal value in D.C. saturation characteristics or temperature raise becomes $\Delta T=40^{\circ}\text{C}$, whichever is lower.

HLSDRH74 Series

| Part Number | L±20% (uH) | Test freq. (KHz) | DCR max. (Ω) | Rated Current (A) |
|------------------|---------------|---------------------|-------------------|----------------------|
| HLSDRH74-100M-LF | 10 | 100 | 0.049 | 1.84 |
| HLSDRH74-120M-LF | 12 | 100 | 0.058 | 1.71 |
| HLSDRH74-150M-LF | 15 | 100 | 0.081 | 1.47 |
| HLSDRH74-180M-LF | 18 | 100 | 0.091 | 1.31 |
| HLSDRH74-220M-LF | 22 | 100 | 0.11 | 1.23 |
| HLSDRH74-270M-LF | 27 | 100 | 0.15 | 1.12 |
| HLSDRH74-330M-LF | 33 | 100 | 0.17 | 0.96 |
| HLSDRH74-390M-LF | 39 | 100 | 0.23 | 0.91 |
| HLSDRH74-470M-LF | 47 | 100 | 0.26 | 0.88 |
| HLSDRH74-560M-LF | 56 | 100 | 0.35 | 0.75 |
| HLSDRH74-680M-LF | 68 | 100 | 0.38 | 0.69 |
| HLSDRH74-820M-LF | 82 | 100 | 0.43 | 0.61 |
| HLSDRH74-101M-LF | 100 | 100 | 0.61 | 0.60 |
| HLSDRH74-121M-LF | 120 | 100 | 0.66 | 0.52 |
| HLSDRH74-151M-LF | 150 | 100 | 0.88 | 0.46 |
| HLSDRH74-181M-LF | 180 | 100 | 0.98 | 0.42 |
| HLSDRH74-221M-LF | 220 | 100 | 1.17 | 0.36 |
| HLSDRH74-271M-LF | 270 | 100 | 1.64 | 0.34 |
| HLSDRH74-331M-LF | 330 | 100 | 1.86 | 0.32 |
| HLSDRH74-391M-LF | 390 | 100 | 2.85 | 0.29 |
| HLSDRH74-471M-LF | 470 | 100 | 3.01 | 0.26 |
| HLSDRH74-561M-LF | 560 | 100 | 3.62 | 0.23 |
| HLSDRH74-681M-LF | 680 | 100 | 4.63 | 0.22 |
| HLSDRH74-821M-LF | 820 | 100 | 5.20 | 0.20 |
| HLSDRH74-102M-LF | 1000 | 100 | 6.00 | 0.18 |

1. Rated current is either the inductance is 25% lower than its nominal value in D.C. saturation characteristics or temperature raise becomes $\Delta T=40^{\circ}\text{C}$, whichever is lower.

HLSDRH124 Series

| Part Number | L (uH) | tolerance | Test freq. (KHz) | DCR max. (Ohms) | Rated Current (A) |
|-------------------|--------|-----------|------------------|-----------------|-------------------|
| HLSDRH124-3R9M-LF | 3.9 | ±20% | 100 | 0.015 | 6.50 |
| HLSDRH124-4R7M-LF | 5.0 | ±20% | 100 | 0.018 | 5.70 |
| HLSDRH124-6R8M-LF | 6.8 | ±20% | 100 | 0.023 | 4.90 |
| HLSDRH124-8R2M-LF | 8.2 | ±20% | 100 | 0.026 | 4.60 |
| HLSDRH124-100M-LF | 10 | ±20% | 100 | 0.028 | 4.50 |
| HLSDRH124-120M-LF | 12 | ±20% | 100 | 0.038 | 4.00 |
| HLSDRH124-150M-LF | 15 | ±20% | 100 | 0.050 | 3.20 |
| HLSDRH124-180M-LF | 18 | ±20% | 100 | 0.057 | 3.10 |
| HLSDRH124-220M-LF | 22 | ±20% | 100 | 0.066 | 2.90 |
| HLSDRH124-270M-LF | 27 | ±20% | 100 | 0.080 | 2.80 |
| HLSDRH124-330M-LF | 33 | ±20% | 100 | 0.097 | 2.70 |
| HLSDRH124-390M-LF | 39 | ±20% | 100 | 0.132 | 2.10 |
| HLSDRH124-470M-LF | 47 | ±20% | 100 | 0.150 | 1.90 |
| HLSDRH124-560M-LF | 56 | ±20% | 100 | 0.190 | 1.80 |
| HLSDRH124-680M-LF | 68 | ±20% | 100 | 0.220 | 1.50 |
| HLSDRH124-820M-LF | 82 | ±20% | 100 | 0.260 | 1.30 |
| HLSDRH124-101M-LF | 100 | ±20% | 100 | 0.308 | 1.20 |
| HLSDRH124-121M-LF | 120 | ±20% | 100 | 0.380 | 1.10 |
| HLSDRH124-151M-LF | 150 | ±20% | 100 | 0.530 | 0.95 |
| HLSDRH124-181M-LF | 180 | ±20% | 100 | 0.620 | 0.85 |
| HLSDRH124-221M-LF | 220 | ±20% | 100 | 0.700 | 0.80 |
| HLSDRH124-271M-LF | 270 | ±20% | 100 | 0.870 | 0.60 |
| HLSDRH124-331M-LF | 330 | ±20% | 100 | 0.990 | 0.50 |

1. Rated current is either the inductance is 25% lower than its nominal value in D.C. saturation characteristics or temperature rise becomes $\Delta T=40^{\circ}\text{C}$, whichever is lower.
-

HLSDRH125 Series

| Part Number | L (uH) | Tolerance | Test freq. (KHz) | DCR max. (Ohms) | Rated Current (A) |
|-------------------|-----------|-----------|---------------------|--------------------|----------------------|
| HLSDRH125-1R3N-LF | 1.3 | ±30% | 100 | 0.012 | 8.00 |
| HLSDRH125-2R1N-LF | 2.1 | ±30% | 100 | 0.014 | 7.00 |
| HLSDRH125-3R1N-LF | 3.1 | ±30% | 100 | 0.017 | 6.00 |
| HLSDRH125-4R4N-LF | 4.4 | ±30% | 100 | 0.020 | 5.00 |
| HLSDRH125-5R8N-LF | 5.8 | ±30% | 100 | 0.021 | 4.40 |
| HLSDRH125-7R5N-LF | 7.5 | ±30% | 100 | 0.024 | 4.20 |
| HLSDRH125-100M-LF | 10 | ±20% | 1.0 | 0.025 | 4.00 |
| HLSDRH125-120M-LF | 12 | ±20% | 1.0 | 0.027 | 3.50 |
| HLSDRH125-150M-LF | 15 | ±20% | 1.0 | 0.030 | 3.30 |
| HLSDRH125-180M-LF | 18 | ±20% | 1.0 | 0.034 | 3.00 |
| HLSDRH125-220M-LF | 22 | ±20% | 1.0 | 0.036 | 2.80 |
| HLSDRH125-270M-LF | 27 | ±20% | 1.0 | 0.051 | 2.30 |
| HLSDRH125-330M-LF | 33 | ±20% | 1.0 | 0.057 | 2.10 |
| HLSDRH125-390M-LF | 39 | ±20% | 1.0 | 0.068 | 2.00 |
| HLSDRH125-470M-LF | 47 | ±20% | 1.0 | 0.075 | 1.80 |
| HLSDRH125-560M-LF | 56 | ±20% | 1.0 | 0.011 | 1.70 |
| HLSDRH125-680M-LF | 68 | ±20% | 1.0 | 0.012 | 1.50 |
| HLSDRH125-820M-LF | 82 | ±20% | 1.0 | 0.014 | 1.40 |
| HLSDRH125-101M-LF | 100 | ±20% | 1.0 | 0.016 | 1.30 |
| HLSDRH125-121M-LF | 120 | ±20% | 1.0 | 0.017 | 1.10 |
| HLSDRH125-151M-LF | 150 | ±20% | 1.0 | 0.023 | 1.00 |
| HLSDRH125-181M-LF | 180 | ±20% | 1.0 | 0.029 | 0.90 |
| HLSDRH125-221M-LF | 220 | ±20% | 1.0 | 0.040 | 0.80 |
| HLSDRH125-271M-LF | 270 | ±20% | 1.0 | 0.046 | 0.75 |
| HLSDRH125-331M-LF | 330 | ±20% | 1.0 | 0.051 | 0.68 |
| HLSDRH125-391M-LF | 390 | ±20% | 1.0 | 0.069 | 0.65 |
| HLSDRH125-471M-LF | 470 | ±20% | 1.0 | 0.077 | 0.58 |
| HLSDRH125-561M-LF | 560 | ±20% | 1.0 | 0.086 | 0.54 |
| HLSDRH125-681M-LF | 680 | ±20% | 1.0 | 1.200 | 0.48 |
| HLSDRH125-821M-LF | 820 | ±20% | 1.0 | 1.340 | 0.43 |
| HLSDRH125-102M-LF | 1000 | ±20% | 1.0 | 1.530 | 0.40 |

1. Rated current is either the inductance is 25% lower than its nominal value in D.C. saturation characteristics or temperature rise becomes $\Delta T=40^{\circ}\text{C}$, whichever is lower.
-