

SMD Power Inductor(HLSDRB Series) 贴片功率电感 HLSDRB 系列

FEATURES 特点

- High heat resistance and excellent solderability.
良好的可焊性
- Excellent terminal strength construction.
良好的焊盘结构
- Magnetically shielded construction. 磁屏蔽结构
- Surface mount inductor with high current rating.
大电流表面贴装电感



APPLICATIONS 应用

- Ideally used in Digital camera, notebook PC, LCD TV set, DC-DC Converters, etc.
用于数码相机、笔记本电脑、LCD 电视、DC-DC 转换等。

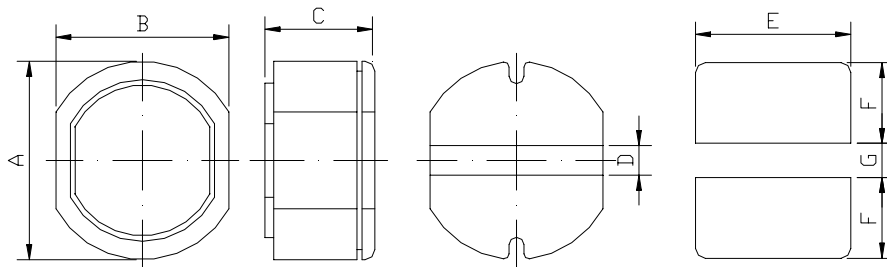
Product Identification 产品标识

HLSDRB 63 - 100 M : LF

① ② ③ ④ ⑤

- ① Series name 系列名称
- ② Product dimensions 产品尺寸: (5.6*6.2*3.2 mm)
- ③ Inductance Value 电感量: (100: 10uH; 101:100uH)
- ④ Inductance Tolerance 电感量公差: (K:10% ; L:15% ;M:20%)
- ⑤ Lead free products 无铅产品

Shapes And Dimensions 外形及尺寸示意图



Series	Dimensions(mm)						
	A	B	C	D	E	F	G
HLSDRB63	5.6±0.5	6.2±0.5	3.2±0.5	1.7 Ref.	5.5	1.4	1.7
HLSDRB74	7.0±0.5	7.8±0.5	4.5±0.5	2.0 Ref.	7.5	4.0	2.0

Electrical Characteristics 电气性能

HLSDRB63 Series

Part Number	L (uH)	Tolerance	Test freq. (MHz)	DCR max. (Ω)	Rated Current (A)
HLSDRB63-100M-LF	10	±20%	2.52	0.14	1.000
HLSDRB63-120M-LF	12	±20%	2.52	0.16	0.940
HLSDRB63-150M-LF	15	±20%	2.52	0.18	0.860
HLSDRB63-180M-LF	18	±20%	2.52	0.25	0.780
HLSDRB63-220M-LF	22	±20%	2.52	0.32	0.760
HLSDRB63-270M-LF	27	±20%	2.52	0.36	0.640
HLSDRB63-330L-LF	33	±15%	2.52	0.41	0.610
HLSDRB63-390L-LF	39	±15%	2.52	0.47	0.530
HLSDRB63-470L-LF	47	±15%	2.52	0.51	0.500
HLSDRB63-560L-LF	56	±15%	2.52	0.72	0.460
HLSDRB63-680L-LF	68	±15%	2.52	0.82	0.420

HLSDRB74 Series

Part Number	L (uH)	Tolerance	Test freq. (Hz)	DCR max. (Ω)	Rated Current (A)
HLSDRB74-100M-LF	10	±20%	2.52M	0.07	1.620
HLSDRB74-120M-LF	12	±20%	2.52M	0.07	1.570
HLSDRB74-150M-LF	15	±20%	2.52M	0.08	1.390
HLSDRB74-180M-LF	18	±20%	2.52M	0.10	1.290
HLSDRB74-220M-LF	22	±20%	2.52M	0.13	1.120
HLSDRB74-270M-LF	27	±20%	2.52M	0.16	1.060
HLSDRB74-330L-LF	33	±15%	2.52M	0.18	0.970
HLSDRB74-390L-LF	39	±15%	2.52M	0.18	0.910
HLSDRB74-470L-LF	47	±15%	2.52M	0.27	0.800
HLSDRB74-560L-LF	56	±15%	2.52M	0.29	0.760
HLSDRB74-680L-LF	68	±15%	2.52M	0.33	0.680
HLSDRB74-820L-LF	82	±15%	2.52M	0.43	0.620
HLSDRB74-101K-LF	100	±10%	1K	0.49	0.550
HLSDRB74-121K-LF	120	±10%	1K	0.68	0.490
HLSDRB74-151K-LF	150	±10%	1K	0.94	0.440
HLSDRB74-181K-LF	150	±10%	1K	1.00	0.400
HLSDRB74-221K-LF	220	±10%	1K	1.18	0.360
HLSDRB74-271K-LF	270	±10%	1K	1.30	0.330

1. Rated Current: it is either the inductance is 10% lower than its nominal value in D.C. saturation characteristics or temperature rise becomes $\Delta T=40^{\circ}\text{C}$, whichever is lower.